

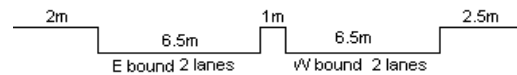
YEAR 2023

COVERAGE (B) STATION 4206

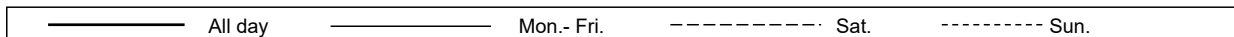
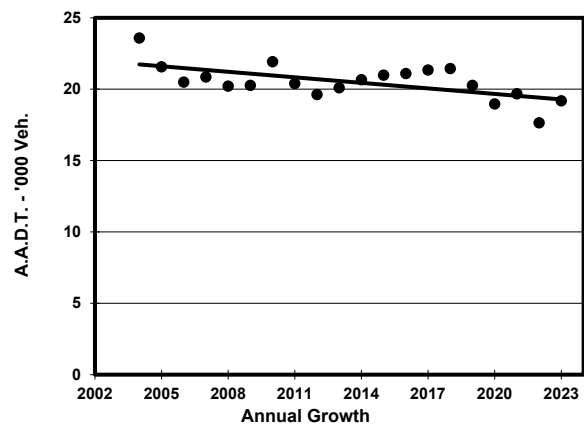
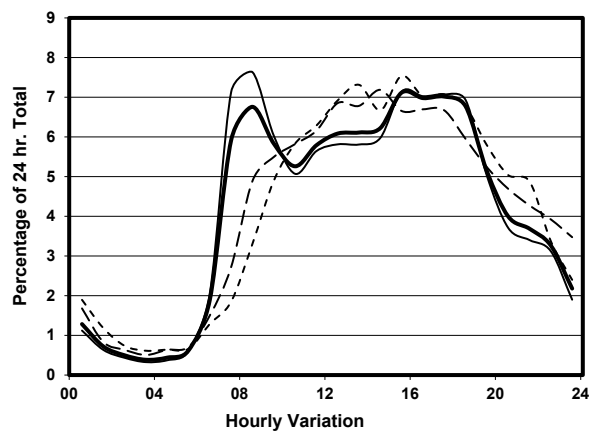
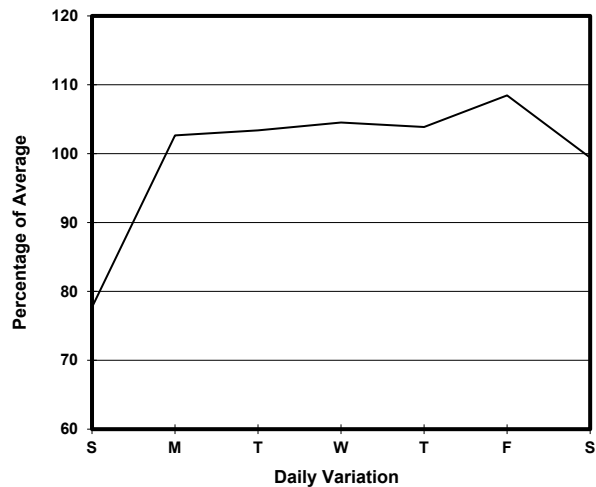
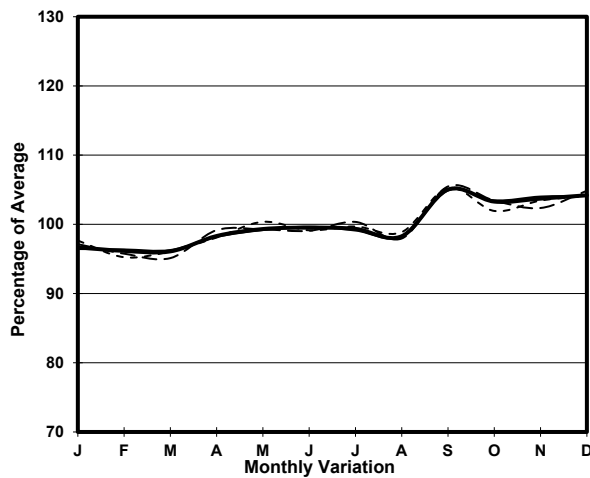
ROAD NETWORK MAJOR

ROAD TYPE DISTRICT DISTRIBUTOR

LINK CORNWALL ST (from WATERLOO RD to NAM CHEONG ST)



1. TRAFFIC FLOW VARIATION AND GROWTH



2. TRAFFIC CHARACTERISTICS (BY DIRECTION)

Parameter	All - Day	Mon. - Fri.	Sat.	Sun.
EAST BOUND				
A.A.D.T.	9500	10050	9550	7540
R 12 / 24 - %	77.5	78.5	74.1	74.7
R 16 / 24 - %	91.6	92	90.1	91.1
AM Peak Hour	0800-0900	0700-0800	0900-1000	0900-1000
One-way flow at AM peak hour	710	820	650	450
T - % (AM)	-	13.6	-	-
PM Peak Hour	1800-1900	1800-1900	1600-1700	1800-1900
One-way flow at PM peak hour	650	700	590	510
T - % (PM)	-	7.7	-	-
Prop.of commercial vehicles - 16 hr.	-	8	-	-
WEST BOUND				
A.A.D.T.	9680	10230	9980	7560
R 12 / 24 - %	74.3	76.1	69.7	68.3
R 16 / 24 - %	92.3	93.1	90	90.1
AM Peak Hour	0800-0900	0800-0900	0900-1000	0900-1000
One-way flow at AM peak hour	590	730	420	290
T - % (AM)	-	5.5	-	-
PM Peak Hour	1700-1800	1700-1800	1700-1800	1700-1800
One-way flow at PM peak hour	730	780	720	580
T - % (PM)	-	3.4	-	-
Prop.of commercial vehicles - 16 hr.	-	7.3	-	-

3. OTHER INFORMATION AND COMMENT

4. Vehicle classification and occupancy - Monday to Friday

Time		Class of vehicle									
		Motor Cycle	Private Car	Taxi	Private LB	PLB	Goods veh.		Non Fr. Bus	Fr. Bus	
							Light	M & H		SD	DD
0700-0800	Pro	1.9	51.4	13.2	6.8	0.0	9.5	2.3	12.9	0.1	2.0
	Ocp	1.0	1.8	2.3	8.2	0.0	1.6	1.8	12.1	8.0	38.5
0800-0900 Peak hour	Pro	3.2	62.5	14.1	3.6	0.0	9.0	1.5	4.9	0.0	1.3
	Ocp	1.1	1.4	1.9	11.9	0.0	1.5	1.3	16.9	0.0	33.2
0900-1000	Pro	1.2	59.5	14.2	1.2	0.0	18.6	0.9	2.6	0.0	2.0
	Ocp	1.0	1.4	1.8	2.3	0.0	1.5	1.0	8.3	0.0	23.2
1000-1100	Pro	1.7	47.1	17.0	4.7	0.0	22.5	3.8	1.3	0.0	2.0
	Ocp	1.0	1.4	2.0	2.7	0.0	1.5	1.4	6.0	0.0	24.2
1100-1200	Pro	3.3	54.1	9.4	3.3	0.0	19.5	3.3	5.7	0.0	1.6
	Ocp	1.0	1.5	2.1	2.1	0.0	1.5	1.5	4.2	0.0	28.6
1200-1300	Pro	2.8	55.2	14.7	4.0	0.0	13.5	4.0	4.0	0.0	1.9
	Ocp	1.0	1.6	2.1	6.3	0.0	1.4	1.0	9.6	0.0	31.1
1300-1400	Pro	1.6	54.1	12.1	4.0	0.0	19.8	2.8	3.6	0.0	1.8
	Ocp	1.0	1.5	2.3	4.3	0.0	1.4	1.6	10.1	0.0	31.9
1400-1500	Pro	4.1	56.7	10.8	3.0	0.0	16.8	2.2	4.1	0.0	2.2
	Ocp	1.0	1.4	2.2	1.9	0.0	1.4	1.7	5.9	0.0	29.0
1500-1600	Pro	2.4	61.4	12.5	4.7	0.0	11.2	1.4	4.7	0.0	1.7
	Ocp	1.0	1.6	2.1	5.6	0.0	1.7	1.8	15.3	0.0	29.1
1600-1700	Pro	2.0	57.9	17.9	4.5	0.0	13.1	0.8	2.5	0.0	1.3
	Ocp	1.0	1.7	1.7	6.1	0.0	1.2	1.7	13.3	0.0	42.0
1700-1800	Pro	3.6	65.2	13.7	3.3	0.0	9.2	0.6	3.0	0.0	1.4
	Ocp	1.1	1.5	2.0	7.8	0.0	1.5	1.5	9.0	0.0	49.3
1800-1900	Pro	5.3	72.9	8.3	1.0	0.0	4.6	1.0	5.0	0.0	1.9
	Ocp	1.1	1.4	1.9	4.0	0.0	1.5	1.0	17.1	0.0	48.2
1900-2000	Pro	2.5	71.3	14.5	0.0	0.0	6.0	0.7	3.2	0.0	1.9
	Ocp	1.0	1.4	2.1	0.0	0.0	1.5	1.0	4.2	0.0	32.9
2000-2100	Pro	2.8	60.4	21.3	0.0	0.0	9.0	1.7	1.7	0.0	3.2
	Ocp	1.0	1.4	1.7	0.0	0.0	1.5	1.0	3.0	0.0	21.8
2100-2200	Pro	5.0	67.1	20.7	0.0	0.0	2.2	1.1	0.6	0.0	3.2
	Ocp	1.0	1.5	1.8	0.0	0.0	1.3	1.5	2.0	0.0	22.7
2200-2300	Pro	4.5	60.1	21.7	0.6	0.0	6.4	0.0	3.8	0.0	2.9
	Ocp	1.3	1.4	2.0	4.0	0.0	1.4	0.0	2.8	0.0	20.7
16 hours	Pro	2.9	60.1	14.3	3.0	0.0	12.1	1.7	4.1	0.1	1.9
	Ocp	1.0	1.5	2.0	6.1	0.0	1.5	1.4	10.7	8.0	31.5

Legend: Pro. Proportion of vehicles in % (Sum may not add up to 100% due to figure rounding)*

Ocp. Average occupancy of vehicles including both driver and passengers*

M&H Medium and Heavy

* All traffic data are collected from combined bounds